



DIGITAL ANTONELLO CROCE OCCLUSAL SYSTEM

# WHAT DOES IT DO?

THE INNOVATIVE SYSTEM THAT ALLOWS YOU TO REPOSITION **ANY 3D-PRINTED MODEL** INTO YOUR TRADITIONAL ARTICULATOR USING A **MAGNET-BASED SYSTEM**.

**OPTIMIZED FOR 3D PRINTING OF MODELS**, IT OFFERS A **UNIQUE** SOLUTION ON THE MARKET.

THE SYSTEM CONSISTS OF TWO PARTS: **SOFTWARE** AND **HARDWARE**.

THE SOFTWARE PART CAN BE DOWNLOADED FROM:  
**[WWW.BLENDERFORDENTAL.COM](http://WWW.BLENDERFORDENTAL.COM)**



SCAN THE **QR CODE**  
AND DOWNLOAD THE **SOFTWARE**



**blenderfordental**

IN THE **DACOS SOFTWARE**, USERS WILL FIND A BUTTON THAT WILL DIRECT THEM TO THE **RUTHINIUM E-COMMERCE** SITE FOR PURCHASING THE KIT.



# HOW DOES IT WORK?

THE USE OF **DACOS** IS BASED ON THE INNOVATIVE USE OF THE **DACOS MODULE** AND THE **DACOS PLATE**.

THIS SYSTEM ALLOWS YOU TO GENERATE A 3D-PRINTED MODEL WITH **SPECIFIC ATTACHMENTS** IN WHICH **MAGNETS** WILL BE LOCATED, **ALLOWING THE MODEL TO EASILY AND SECURELY** ATTACH TO THE ARTICULATOR.

THE **DACOS PLATE** IS DESIGNED TO **PERFECTLY** REFLECT THE GEOMETRY AND COORDINATES SPECIFIED IN THE **DACOS MODULE**.

THIS TECHNOLOGY ENSURES **UNPRECEDENTED** PRECISION IN THE REPOSITIONING OF MODELS, FAITHFULLY REFLECTING THE **ORIGINAL DIGITAL DESIGN** WHILE MAINTAINING THE **SPATIAL ACCURACY** REQUIRED FOR HIGH-QUALITY INTERVENTIONS AND CHECKS.



# FOR ALL ARTICULATORS

**DACOS** IS COMPATIBLE WITH **ALL TYPES OF ARTICULATORS** THANKS TO ITS **SELF-INSTALLATION** PROCESS, WHICH INVOLVES PLASTERING THE **DACOS PLATE** IN THE DESIRED ARTICULATOR, REQUIRED ONLY FOR THE FIRST USE.

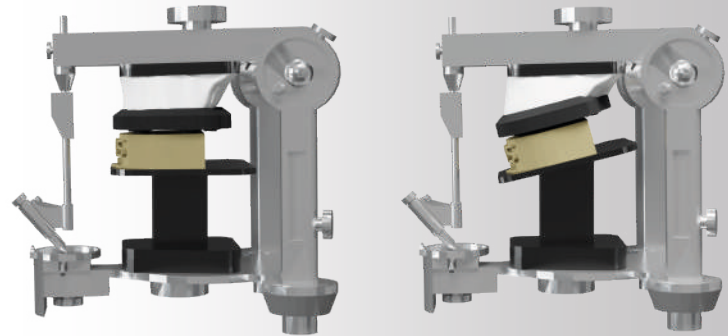
**DACOS** OFFERS SEVERAL HEIGHT OPTIONS:

- **DACOS 40MM:** COMPATIBLE WITH ARTICULATORS THAT HAVE A MINIMUM **Z** HEIGHT OF **65MM**.
- **DACOS 60MM:** COMPATIBLE WITH ARTICULATORS THAT HAVE A MINIMUM **Z** HEIGHT OF **90MM**.

THIS ALLOWS USERS TO UTILIZE **DACOS** ON A WIDE RANGE OF ARTICULATORS, ENSURING **PRECISION** AND **EASE OF USE** WITH JUST ONE-TIME INSTALLATION.

## INCLUDED ANATOMICAL PLANES

THANKS TO THE **CAMPER** AND **FRANKFURT** PLANES AND THE **PILOT CALIBRATOR**, **DACOS** CAN BE INSTALLED ACCORDING TO THE DESIRED OCCLUSAL PLANE.



# PRINT YOUR MASTER CALIBRATOR

**CUSTOMISED ACCURACY:** ELIMINATES THE VARIABLES OF EXTERNAL PRINTING PROCESSES BY CREATING A CALIBRATOR PERFECTLY SUITED TO YOUR SYSTEM ENSURING THAT THE INSTALLATION IS ALWAYS **PRECISE AND CORRECT**.

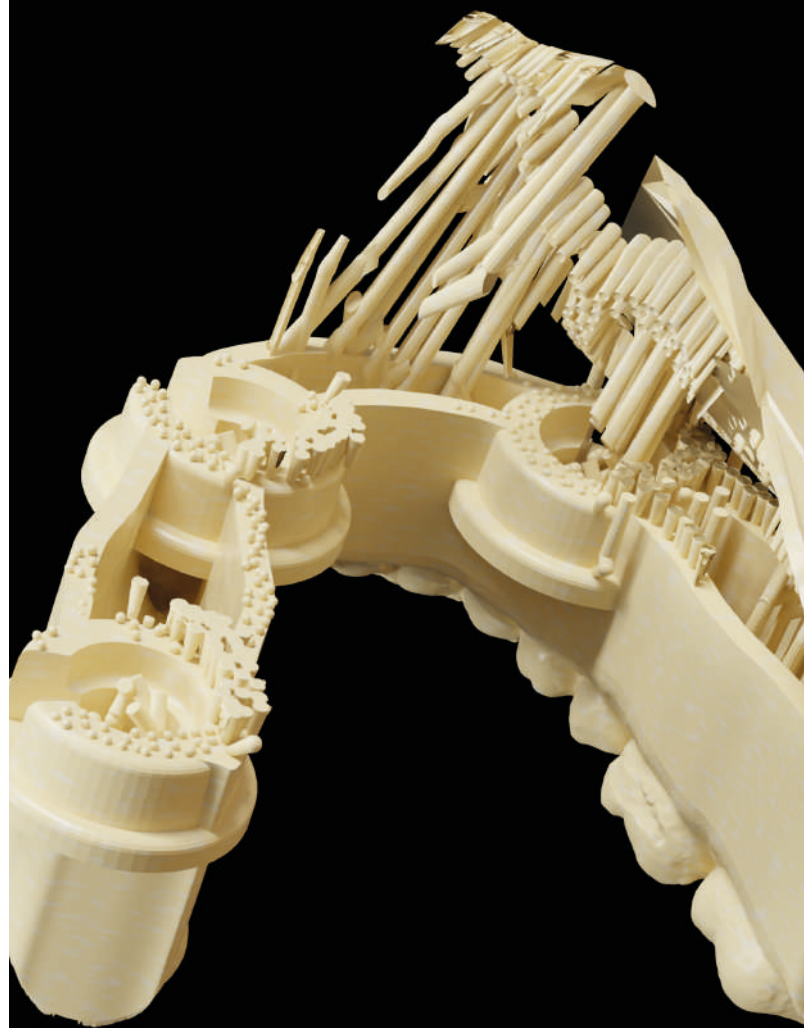
**FREE FILE:** DOWNLOAD THE STL FILE AND PRINT IT DIRECTLY TO YOUR 3D PRINTER TO BEST SYNCHRONISE THE DACOS SYSTEM WITH YOUR CONFIGURATION.

**FLEXIBLE OFFSETS:** CHOOSE BETWEEN TIGHT, STANDARD OR LOOSE TO CALIBRATE TO YOUR NEEDS (STANDARD RECOMMENDED).

## DEVELOPED FOR 3D PRINTING

**DACOS** HAS BEEN DEVELOPED WITH THE PRINCIPLE OF **'INTERFERENCE-FREE SUPPORT'**.

METICULOUSLY DESIGNED TO **INTEGRATE PERFECTLY** WITH **3D PRINTING** NESTING, INCLUDING THOSE THAT USE SUPPORTS, THE INTERIOR OF THE ATTACHMENTS IS **FREE OF SUPPORTS IN CRITICAL AREAS** AND FEATURES REDUCED HORIZONTAL EXTENSIONS BELOW THE DEFORMATION THRESHOLD.



# UNIQUENESS

**INNOVATION** THAT SETS **STANDARDS.**

**DACOS** IS THE ONLY SYSTEM THAT FACILITATES THE **OCCLUSAL CHECK** OF DIGITALLY DESIGNED AND PRODUCED DENTURES, IN YOUR ARTICULATOR, WITH **PRECISION** AND **EASE.**

# UNIVERSAL

**DACOS** IS NOT ONLY COMPATIBLE WITH ALL ARTICULATORS, BUT IT IS ALSO DESIGNED TO BE USED BY EVERY DENTAL CAD DESIGNER, **REGARDLESS OF THE SOFTWARE.** THE DEDICATED **DACOS MODULE** ON **BLENDER FOR DENTAL** ALLOWS YOU TO IMPORT YOUR MODELS, POSITION THEM WITH PRECISION, AND FINALIZE THE PROCESS WITH JUST A FEW CLICKS.

AFTER CLICKING '**FINISH UPPER**' AND '**FINISH LOWER**', THE MODELS ARE READY TO BE RE-EXPORTED INTO **YOUR USUAL SOFTWARE.**

THIS FLEXIBILITY ENSURES A SEAMLESS AND INTEGRATED WORKFLOW, **OPTIMIZING BOTH TIME AND RESOURCES.**



# GLUEJET

**GLUEJET** IS THE TOOL THAT WILL GUIDE YOU STEP BY STEP DURING THE **MAGNET PLACEMENT PROCESS**, ENSURING THEY ARE ALWAYS ORIENTED CORRECTLY.

THANKS TO THIS DEVICE, THE USER CAN INSTALL THE **MAGNETS** IN THE CORRECT DIRECTION **WITHOUT WORRYING** ABOUT THE **REPULSION BETWEEN POLES**.

**GLUEJET** IS COMPOSED OF TWO MAIN ELEMENTS:

- **GLUEJET DISPENSER** INSERTS THE MAGNET INTO THE DESIGNATED POSITION WITHIN THE MODEL.
- **GLUEJET PLUNGER** REFLECTS EXACTLY THE ORIENTATION OF THE MAGNET **ALREADY PRESENT** IN **THE DACOS PLATE**.

WHEN USING **GLUEJET**, THE USER EXTRACTS THE MAGNET THAT WILL BE PLACED, WHICH IS ATTRACTED BY THE MAGNET IN THE **PLUNGER**, ENSURING THAT THE ORIENTATION IS ALWAYS **CORRECT**.





info@ruthinium.it | +39 0425 51628  
ruthinium | shop.ruthinium.com

Follow Us

